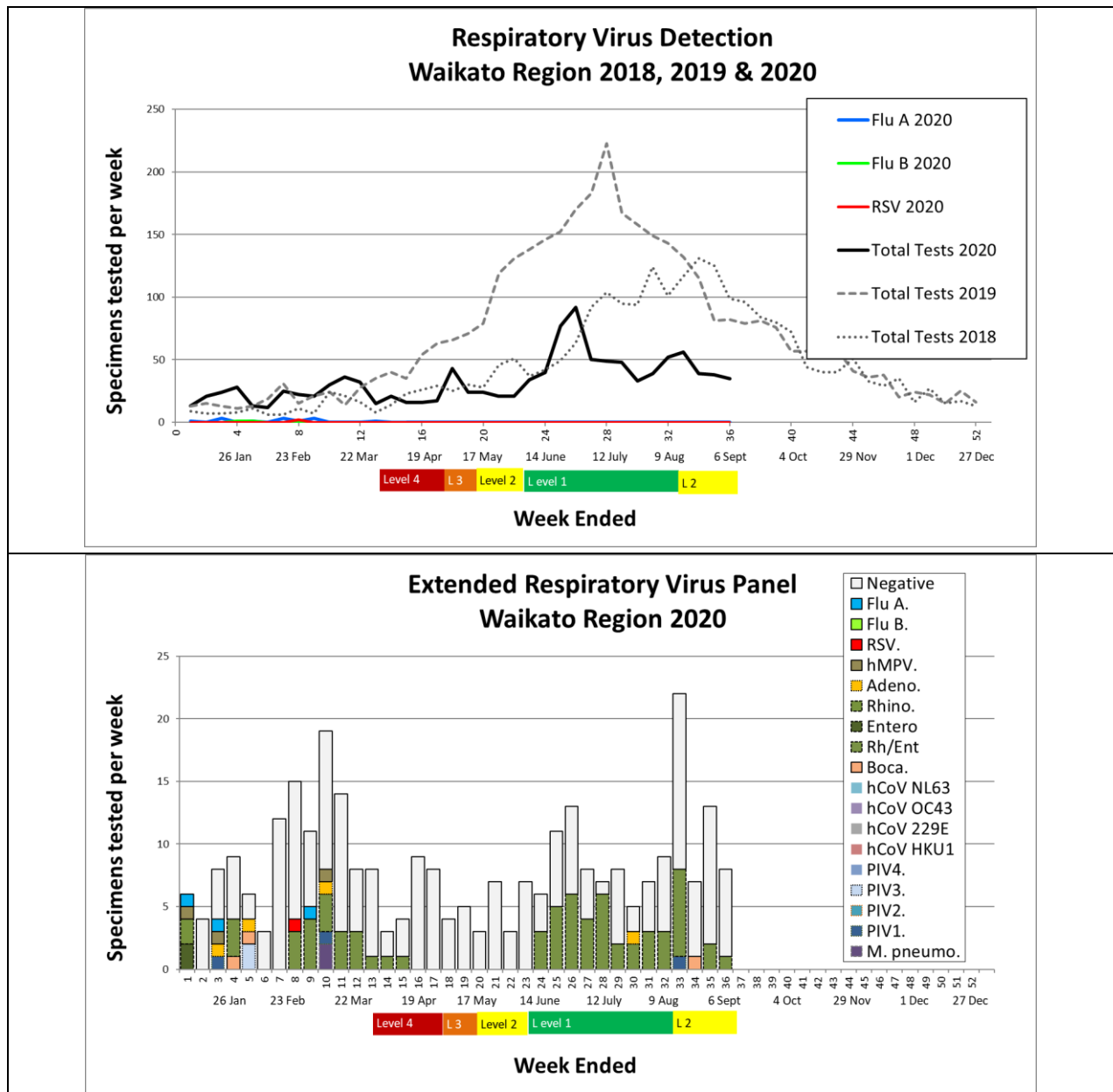


Waikato Respiratory Virus Report

Week 36 2020

Week to 6 Sept 2020

Influenza and RSV are still absent. The percent positive for Rhinovirus and Enterovirus seems lower during Level 2 precautions than during Level 1. Something is causing common cold like illness that isn't on our 20 virus PCR panel. SARS-CoV-2 testing has returned to around 400-700 a day and the only new positives have been from returned travellers in managed isolation facilities.



Waikato laboratory web site and virus report archive: <https://lab.waikatodhb.health.nz/news/>

Global Influenza surveillance: <https://www.who.int/influenza/resources/charts/en/>

WHO global COVID situation page: <https://www.who.int/emergencies/diseases/novel-coronavirus-2019>

NZ COVID numbers available at:

<https://www.health.govt.nz/our-work/diseases-and-conditions/covid-19-novel-coronavirus/covid-19-current-situation/covid-19-current-cases#summary>