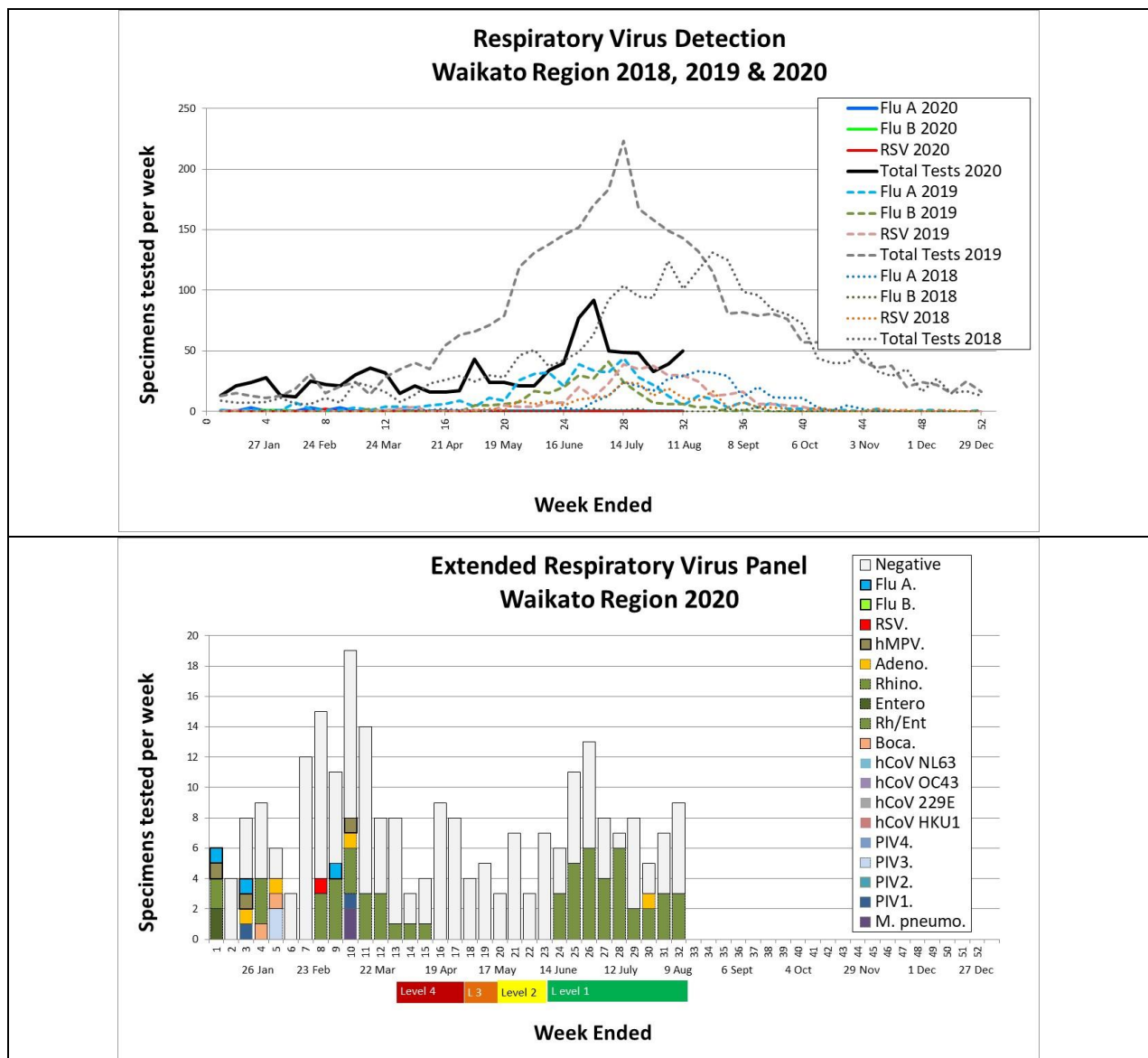


# Waikato Respiratory Virus Report

Week 32 2020

Week to 9 Aug 2020

Sample numbers for Influenza and RSV testing are steady, running at about half those normally received. Influenza and RSV are not circulating, although conditions would be conducive to a seasonal epidemic if they were introduced (see the dotted blue and green lines for 2018 and 2019 in the graph below). The diversity of respiratory viruses present in the Waikato is reduced from previous years; Parainfluenzaviruses, traditional Coronaviruses, and human Metapneumovirus have not been seen. The green bars in the extended respiratory panel graph represent mostly Rhinoviruses, with a few Enteroviruses.



Waikato laboratory web site and virus report archive: <https://lab.waikatodhb.health.nz/news/>

Global Influenza surveillance: <https://www.who.int/influenza/resources/charts/en/>

WHO global COVID situation page: <https://www.who.int/emergencies/diseases/novel-coronavirus-2019>

NZ COVID numbers available at:

<https://www.health.govt.nz/our-work/diseases-and-conditions/covid-19-novel-coronavirus/covid-19-current-situation/covid-19-current-cases#summary>