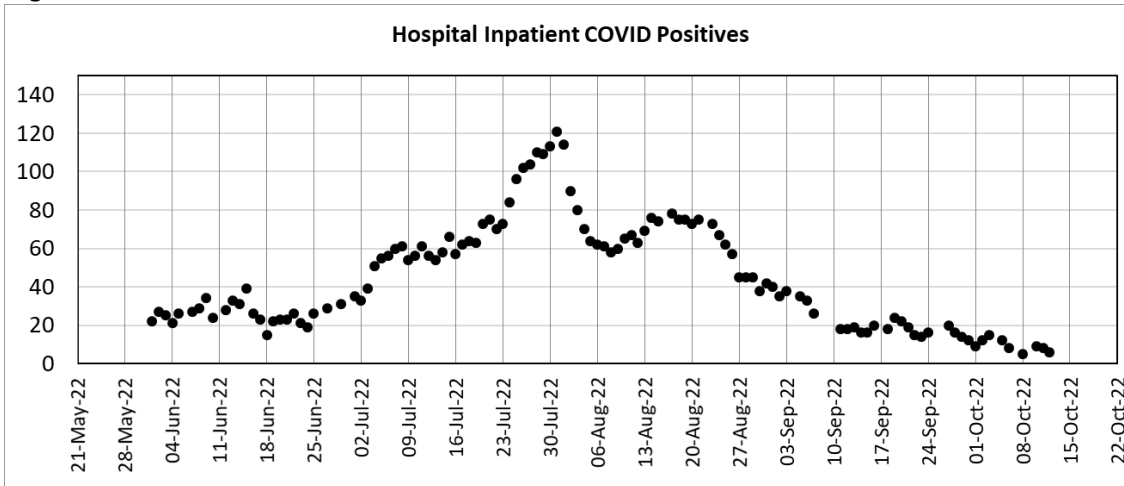


## Emergency Department Respiratory Virus Testing May-Oct 2022

### Inpatient COVID Cases

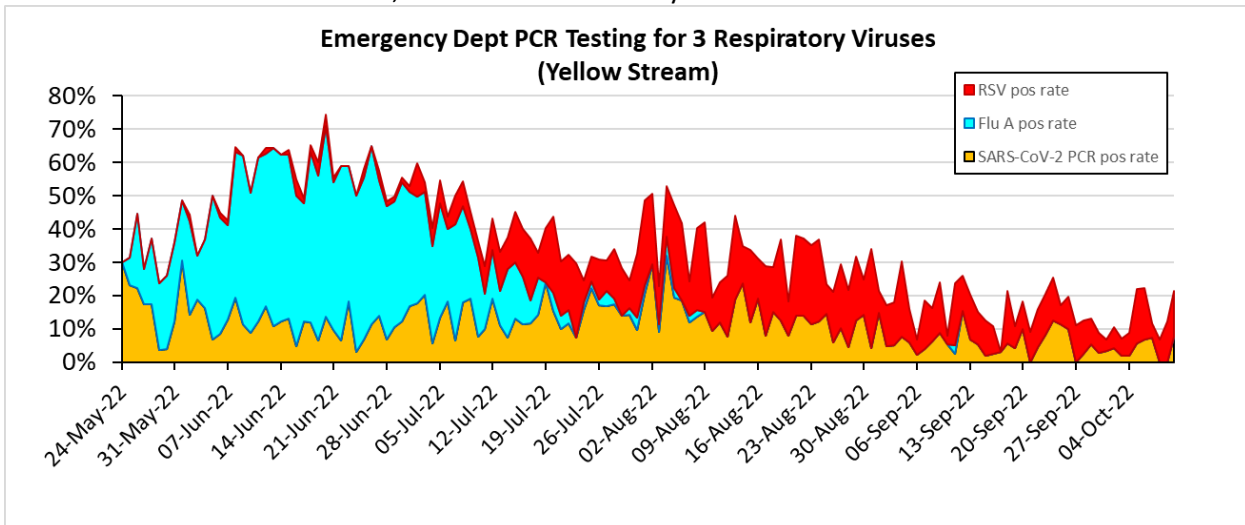
The utilisation of inpatient beds continues to ease and will reflect the burden of COVID infection in the region.



Data from daily COVID Inpatient List

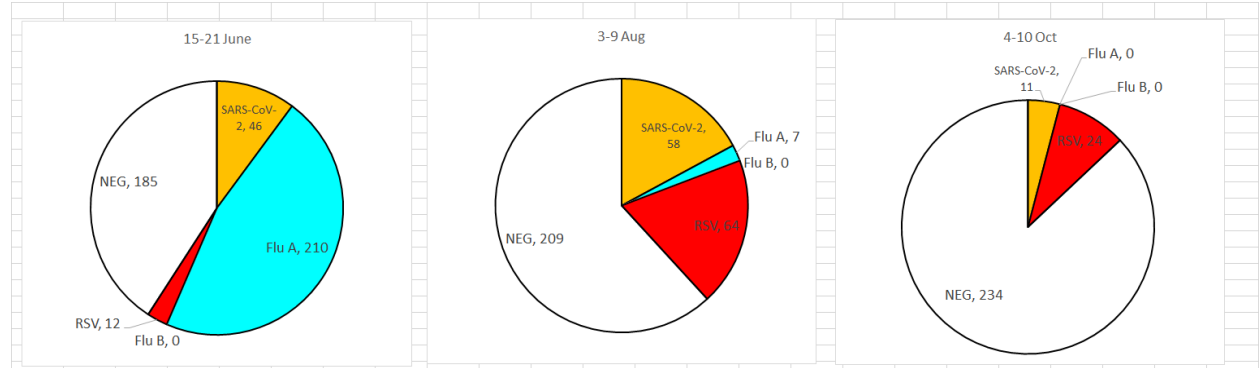
### Winter Epidemiology of Symptomatic Respiratory Illness. GeneXpert® PCR testing in ED Yellow Steam.

SARS-CoV-2 continues to decline, while RSV is still steady.



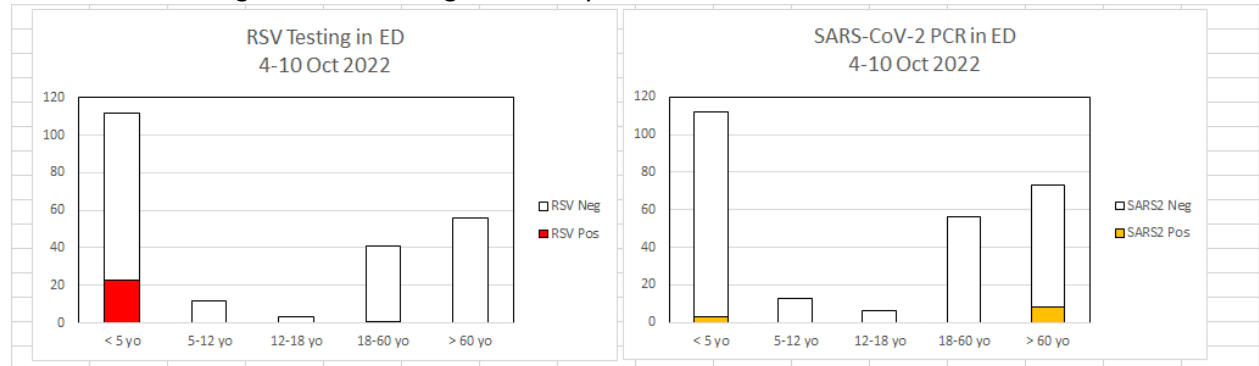
**Selected weeks**

Now more RSV than SARS-CoV-2 at ED. No Influenza A or B.



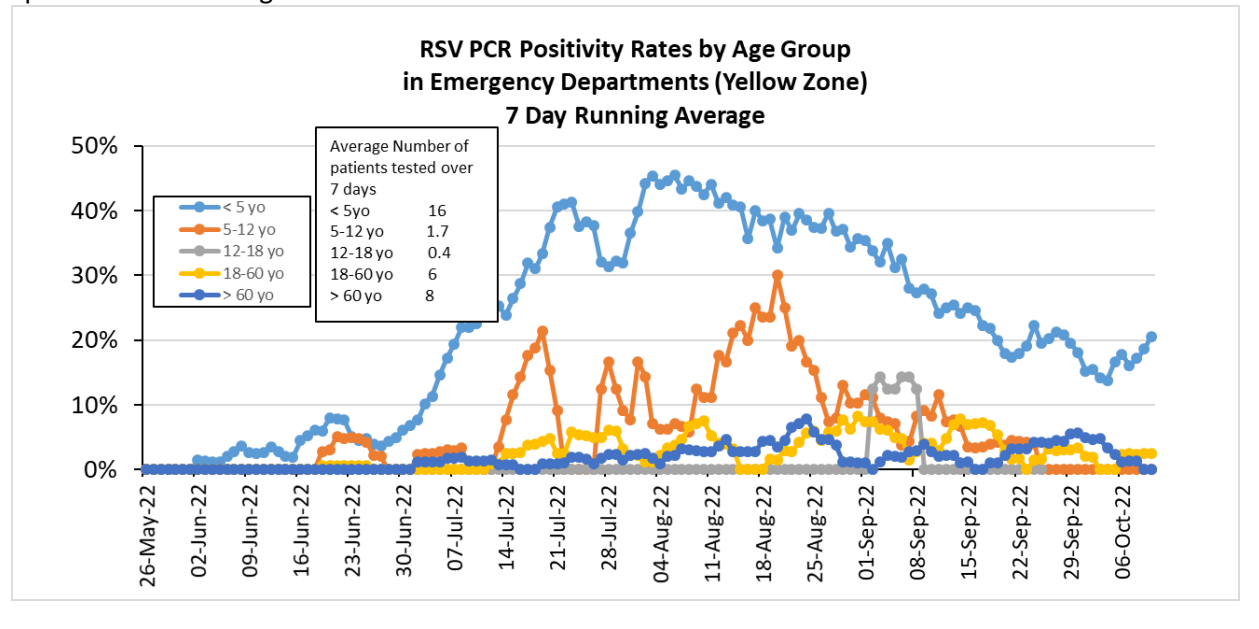
**RSV Age Distributions**

RSV is almost all in under 5 year olds, while and SARS-CoV-2 is in the oldest and youngest age groups. Patients over the age of 5 are no longer routinely tested for RSV.



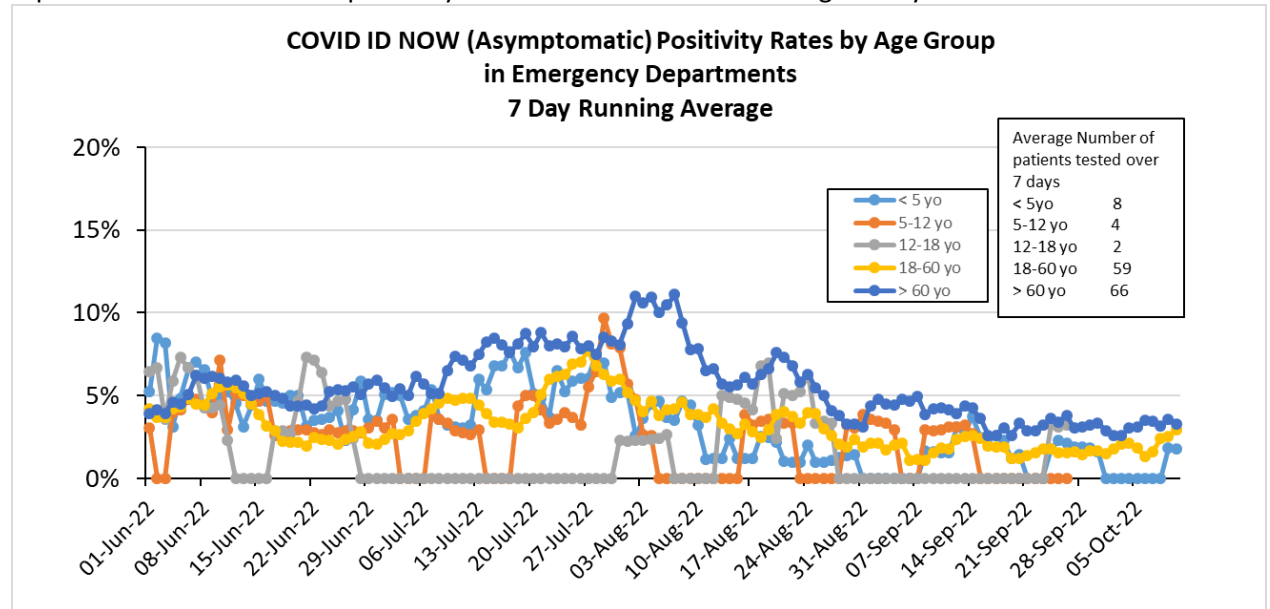
**RSV in Age groups over time**

RSV is now only circulating in the younger children. Spillover cases among those over 60 have declined.



**SARS-CoV-2 ID NOW**

Less than 4% positivity in all age groups. Highest in older adults (dark blue line). Many of these represent residual low level positivity from infections some weeks ago. Very few children tested.



**SARS-CoV-2 PCR in Emergency Dept**

COVID is being seen almost exclusively in those over the age of 60, with a few cases in under 5 yo. The two recent peaks in the 18-60 age group reflect literally one or two cases each day for a short time.

