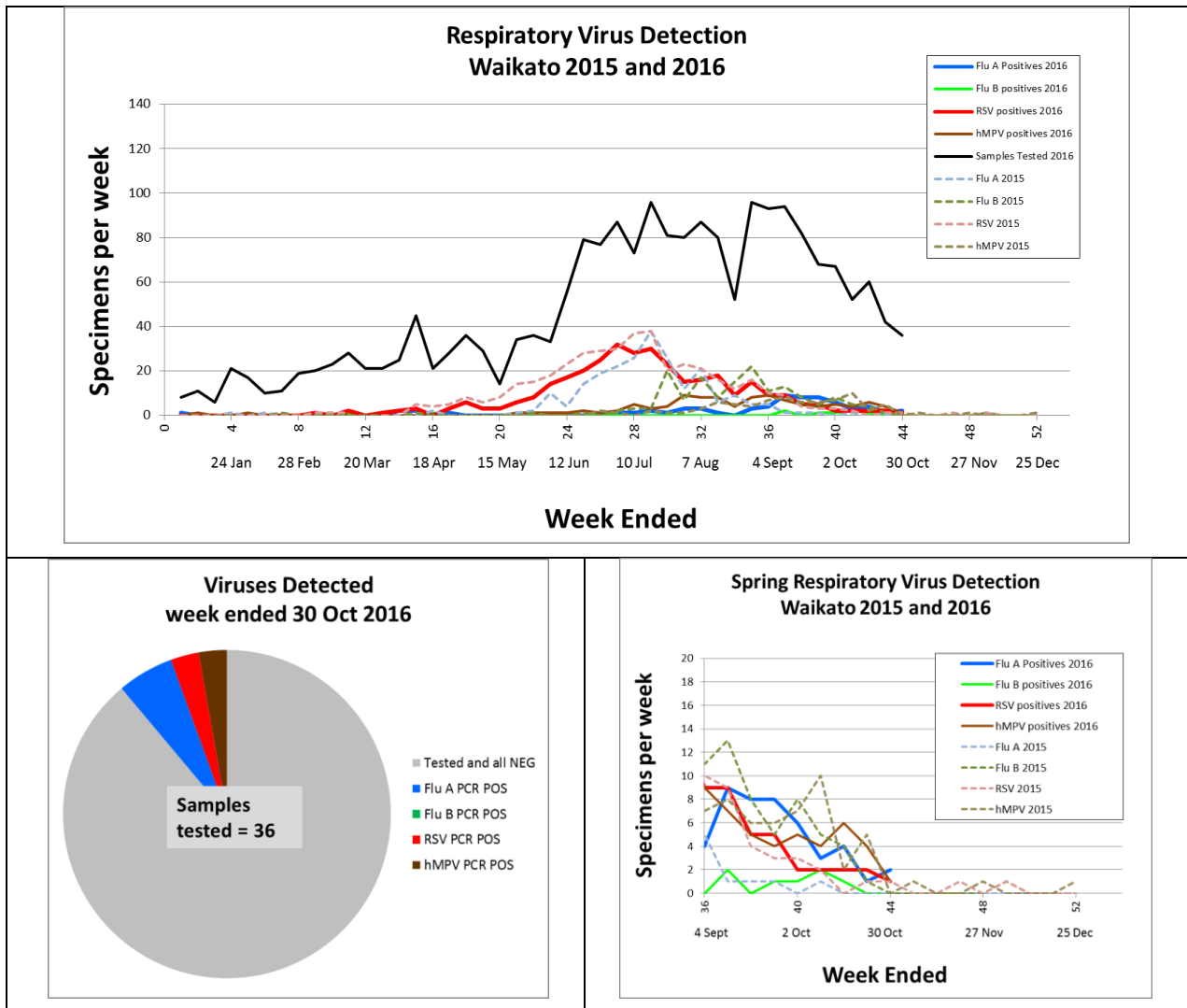


We are still seeing a few cases of Influenza A, but specimen numbers are declining. All viruses are now at low, spring levels, comparable this time in previous years.

We will be reducing the frequency of testing over summer, so clinicians will notice an increase in turnaround time for results. If you have a severely ill patient and virus results will affect management, please phone the microbiology department to negotiate early testing.



Waikato Hospital laboratory web site: <http://lab.waikatodhb.health.nz/>

Canterbury Respiratory Virus reports: <http://intel.phuserver.org.nz/>

ESR Respiratory virus surveillance: https://surv.esr.cri.nz/virology/influenza_weekly_update.php