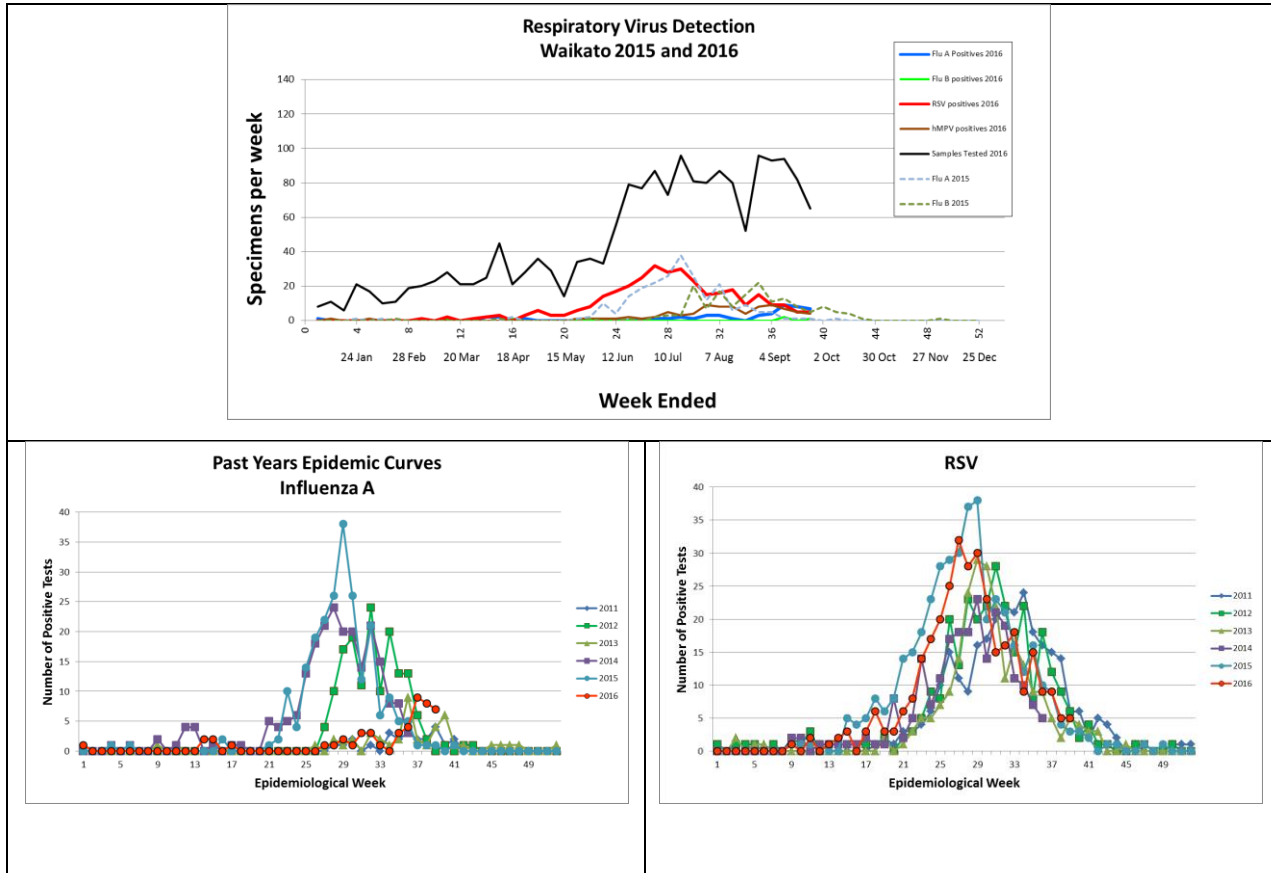


# Waikato Respiratory Virus Report

Week 39 2016

Week to 24 Sept 2016

Influenza A and RSV are still circulating at low levels. Numbers are within the seasonal envelope for spring in past years.



Waikato Hospital laboratory web site: <http://lab.waikatodhb.health.nz/>

Canterbury Respiratory Virus reports: <http://intel.phuserver.org.nz/>

ESR Respiratory virus surveillance: [https://surv.esr.cri.nz/virology/influenza\\_weekly\\_update.php](https://surv.esr.cri.nz/virology/influenza_weekly_update.php)