

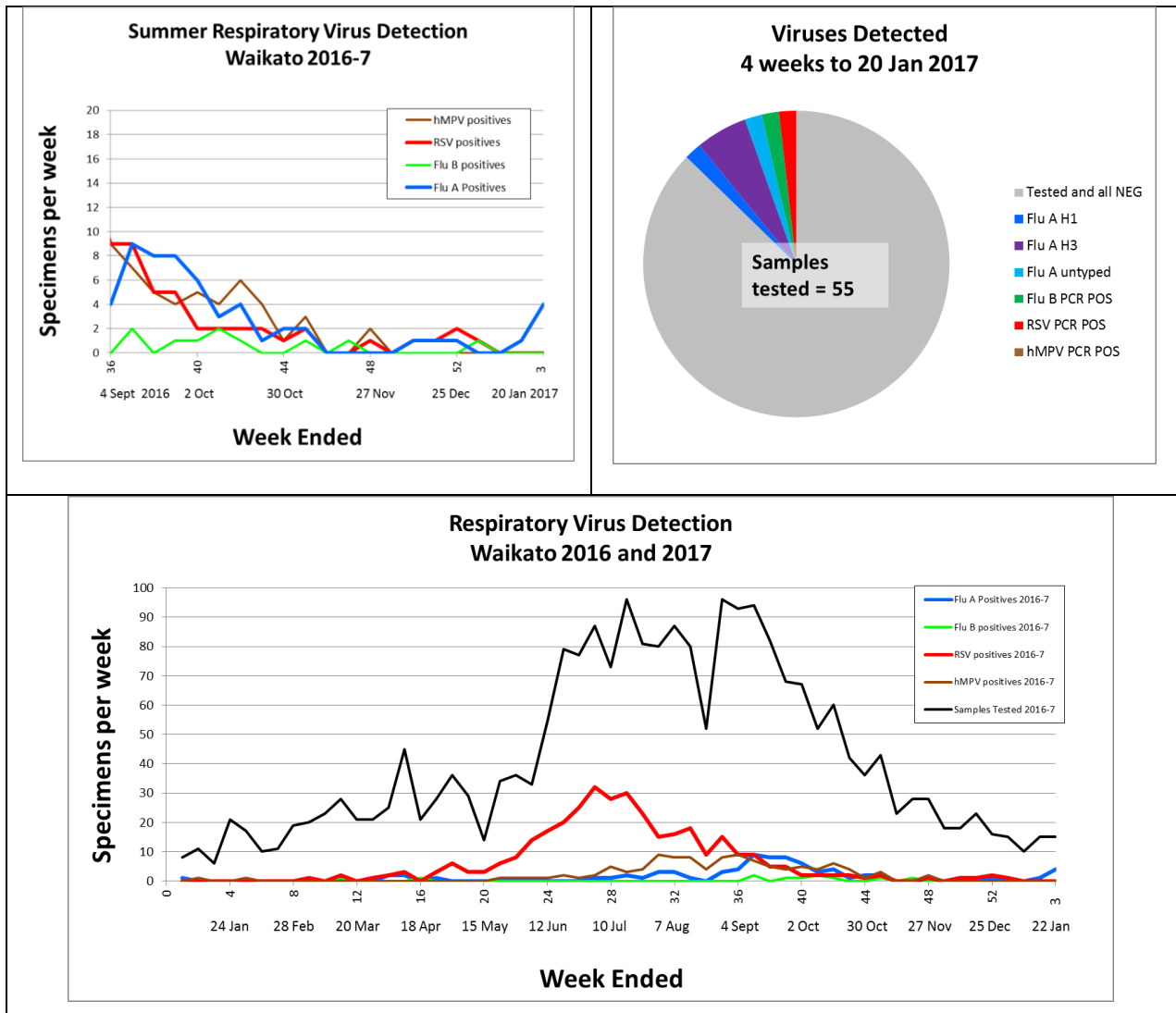
Waikato Respiratory Virus Report

Week 3 2017

Week to 22 Jan 2017

A few cases of Influenza and RSV are still occurring.

We have had one case of Influenza B, complicated by Haemophilus influenzae and S. aureus superinfection with severe shock and also an outbreak of Influenza A H3 on a hospital ward. 13 staff and 12 patients were affected. Most staff had been vaccinated in early 2016 and were able to continue working until the outbreak was recognised, when staff with even mild symptoms were advised to stay home. The case of Influenza A H1 had contact with unwell travellers from a tropical region.



Waikato Hospital laboratory web site: <http://lab.waikatodhb.health.nz/>